



Technical Data Sheet

KTL-450

PTFE Micropowder

KTL-450 is the PTFE micropowder as additive for engineering plastics and coatings. KTL-450 drastically reduces wear and the friction factor.

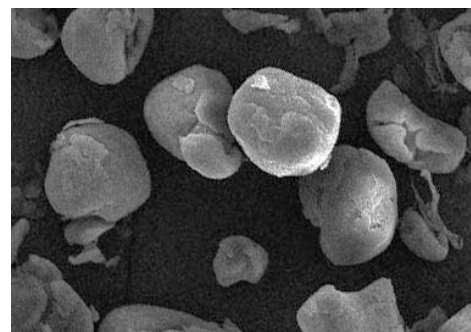
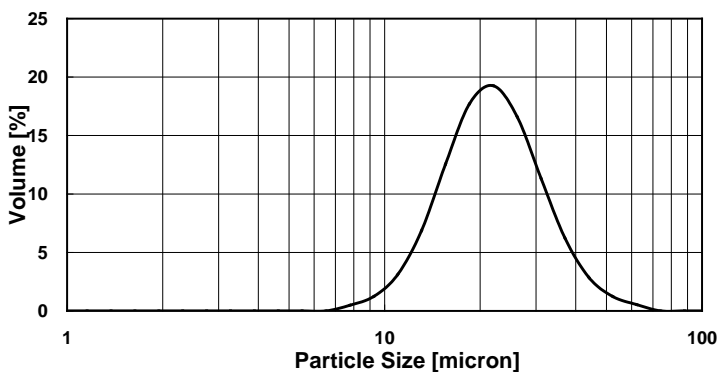
1. Features

KTL-450 is the fine powder of completely sintered PTFE. KTL-450 can be fed into kneaders directly by side feeding because of its excellent flow property. Minute mass or shape change around the melting point, contributing to high stability in mold strength and size. Small melt flow and bleed out over the melting point.

2. Property

Property	Value	Measuring Method
Max. particle size	88.00 μ m	Laser diffraction scattering
D50	17.00 – 27.00 μ m	Laser diffraction scattering
Apparent density	0.50 – 0.70g/ml	JIS-K6891
Melting point	325 – 330 $^{\circ}$ C	TG-DSC
Heat resistance	410 $^{\circ}$ C	TG-DSC

KTL-450 Particle Distribution



SEM

3. Applications

Engineering plastic (PPS, PI, PAI, PEI, PSU, PA, PC etc.), Rubber, Elastomer, Coating

FDA Regulatory Information: 21 CFR 175.300

KITAMURA LIMITED

Web: <http://www.kitamuraltj.jp/>

Email: info@kitamuraltj.jp

