



Technical Data Sheet

KTL-610A

400°C HEAT RESISTANT PTFE MICROPOWDER

KTL-610A is the PTFE micropowder as additive for engineering plastics and coatings. KTL-610A drastically reduces wear and the friction factor.

1. Features

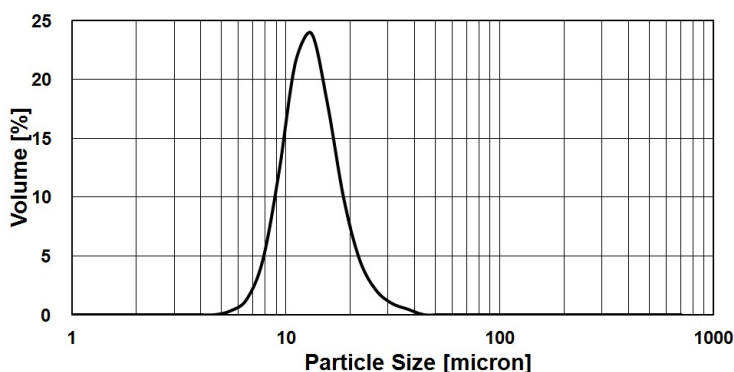
KTL-610A is the fine powder of completely sintered PTFE. KTL-610A is the enhanced grade of KTL-610 to meet higher temperature stability.

KTL-610A can be fed into extruders directly by side feeding because of its excellent flow property. Little mass or shape change around the melting point, contributing to high stability in mold strength and size. Small melt flow or bleed to the surface of plastics over the melting point.

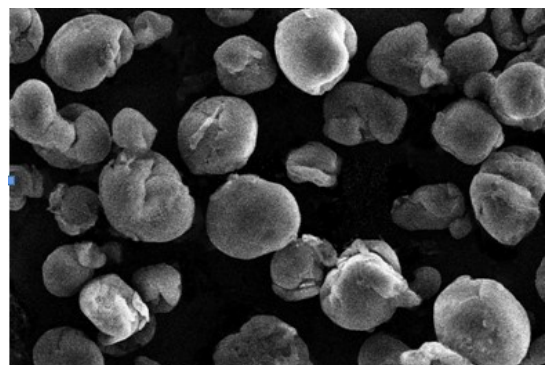
2. Property

| Property | Value | Measuring Method |
|--------------------|-------------------------|------------------------------|
| Max. particle size | 62.23 μ m or less | Laser diffraction scattering |
| D50 | 12.00 \pm 3.0 μ m | Laser diffraction scattering |
| Apprent density | 0.50 \pm 0.10g/ml | JIS-K6891 |
| Melting point | 325°C~335°C | TG-DSC |
| Heat resistance | 430°C | TG-DSC |

KTL-610A Particle Distribution



SEM



3. Applications

Engineering plastic (PEEK, Aromatic PA, PES, PPS, PI, PAI, PEI etc.), Rubber, Elastomer, Coating
FDA Regulatory Information: 21 CFR 177.1550, 21 CFR 175.300

KITAMURA LIMITED

Web: <http://www.kitamuraltld.jp/>

Email: info@kitamuraltld.jp

